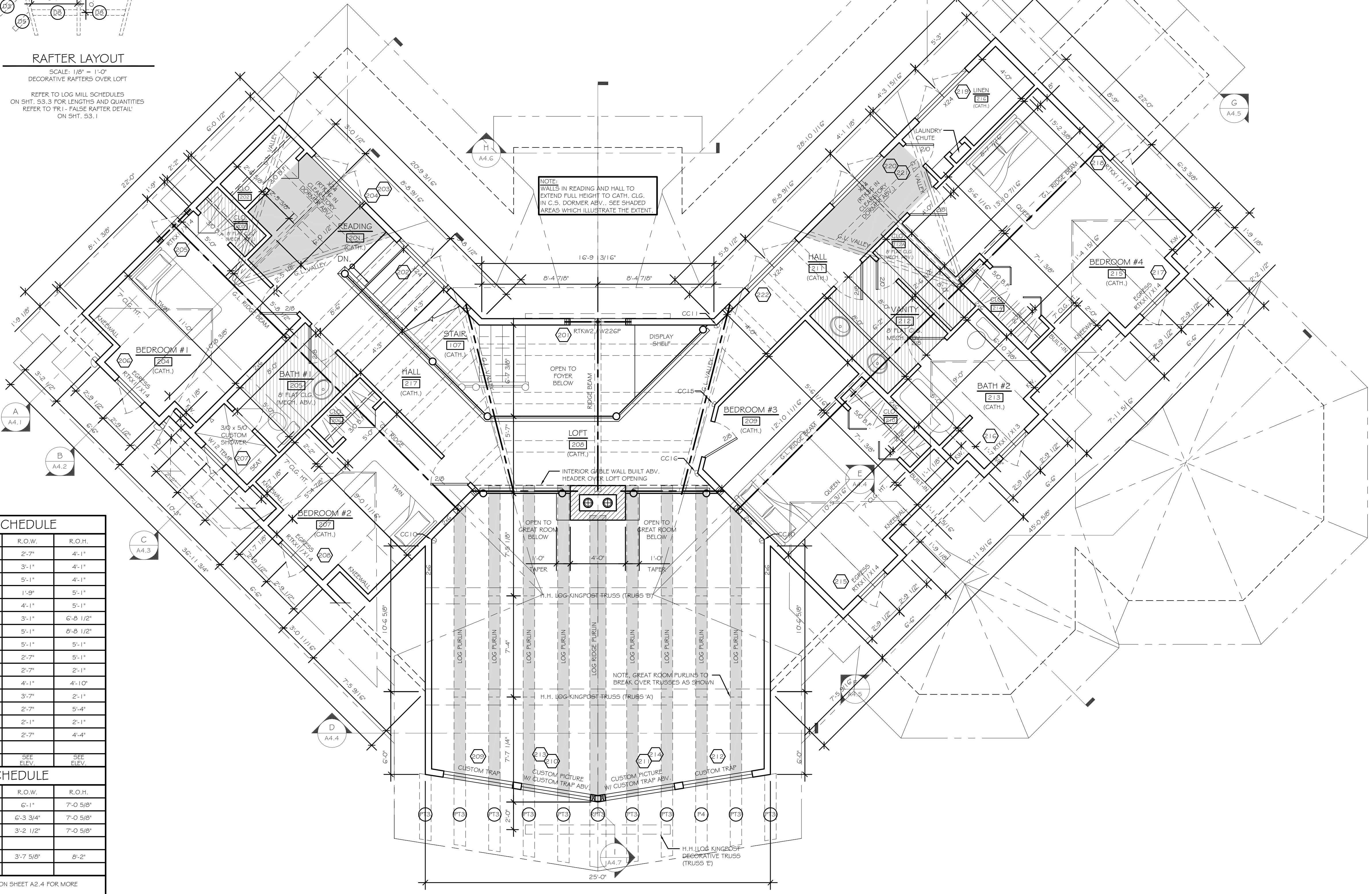


RAFTER LAYOUT

SCALE: 1/8" = 1'-0"
 DECORATIVE RAFTERS OVER LOFT
 REFER TO LOG MILL SCHEDULES ON SHT. S3.3 FOR LENGTHS AND QUANTITIES
 REFER TO TR-1 FALSE RAFTER DETAIL ON SHT. S3.1



NOTE: WALLS IN READING AND HALL TO EXTEND FULL HEIGHT TO CATH. CLG. IN C.S. DORMER ABV. SEE SHADDED AREAS WHICH ILLUSTRATE THE EXTENT

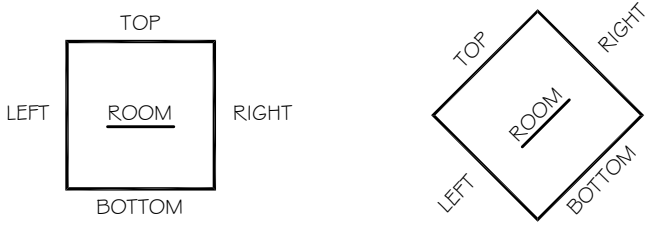
NOTE: INTERIOR GABLE WALL BUILT ABV. HEADER OVER LOFT OPENING

NOTE: GREAT ROOM PURLINS TO BREAK OVER TRUSSES AS SHOWN

NOTE: H.H. LOG KINGPOST TRUSS (TRUSS 'A')

SECOND FLOOR PLAN

SCALE: 1/4" = 1'-0"
 SUB-FLOOR AREA: 1,529 SQ. FEET



ROOM FINISHES PER SCHEDULE ON PAGE. A2.4

WINDOW SCHEDULE

MFGR.	UNIT NO.	R.O.W.	R.O.H.
KOLBE	X14	2'-7"	4'-1"
	E14	3'-1"	4'-1"
	X24	5'-1"	4'-1"
	N15	1'-9"	5'-1"
	W29P	4'-1"	5'-1"
	3050181	3'-1"	6'-8 1/2"
	CUSTOM / 26182	5'-1"	8'-8 1/2"
	X25	5'-1"	5'-1"
	X15	2'-7"	5'-1"
	26201	2'-7"	2'-1"
	RTKW2 / W22GP	4'-1"	4'-10"
	RTK36	3'-7"	2'-1"
	RTKX1 / X14	2'-7"	5'-4"
	W12	2'-1"	2'-1"
	RTKX1 / X13	2'-7"	4'-4"
	GABLE TRANSOMS	SEE ELEV.	SEE ELEV.

DOOR SCHEDULE

MFGR.	UNIT NO.	R.O.W.	R.O.H.
KOLBE	GA 606S	6'-1"	7'-0 5/8"
	XD 606S (MANOR)	6'-3 3/4"	7'-0 5/8"
	XD 306S	3'-2 1/2"	7'-0 5/8"
THERMA-TRU	CCR8040R	3'-7 5/8"	8'-2"

SEE WINDOW AND DOOR OPTIONS ON SHEET A2.4 FOR MORE INFORMATION.
 ALL EXTERIOR WINDOW AND DOOR HEADER MATERIAL IS TO BE 3 1/2" x 9 1/2" TIMBERSTRAND, LAID ON EDGE, TYP. U.N.O.
 ALL EXTERIOR WINDOW AND DOOR HEADER HEIGHTS TO BE 7'-0 5/8", UNLESS NOTED OTHERWISE. ALL EXTERIOR DOORS TO HAVE 3/4" SHIM INSTALLED BELOW THEM AS NOTED AND SHOWN ON SHT. A4.7. (3/4" HAS ALREADY BEEN ADDED TO EACH DOOR R.O.H. ON THIS SCHEDULE.)
 G.C. IS TO COORDINATE WINDOW & DOOR HEADER HEIGHT WITH INTERIOR FINISH SCHEDULE TO VERIFY THAT THE 3/4" SHIM WILL ACCOMMODATE FINISH THICKNESS SELECTED BY CLIENT. SEE FLOOR PLANS, BUILDING SECTIONS AND EXT. ELEVATIONS TO VERIFY HEADER HEIGHTS FOR ALL WINDOWS & DOORS.
 ALL WINDOW TEMPERING T.B.D. BY WINDOW SUPPLIER. UNITS SHOWN AS TEMPERED TO BE VERIFIED BY WINDOW SUPPLIER PER LOCAL CODES AND CONDITIONS.
 REFER TO PLANS AND ELEVATIONS FOR WINDOW OPERATION. ALL UNITS SHOWN WITHOUT OPERATION ARE FIXED UNITS.

NOTE: GENERAL CONTRACTOR IS RESPONSIBLE FOR DISCUSSING SOUND INSULATION OPTIONS WITH OWNERS. TOWN & COUNTRY CEDAR HOMES RECOMMENDS SOUND INSULATION IN WALLS AND FLOOR SYSTEMS SURROUNDING ALL BEDROOMS, BATH ROOMS, LAUNDRY ROOMS AND UTILITY/MECHANICAL ROOMS.

NOTE: REFER TO SHT. A9.2 FOR MORE INFORMATION REGARDING CUSTOM CORNERS CC10, CC11, CC15, & CC16.

DATE:	REVISIONS:
07-28-08	PERMIT PLANS RELEASED
09-05-08	PRODUCTION PLANS RELEASED

THIS DRAWING IS CONSIDERED A PROPRIETARY PRODUCT OF TOWN & COUNTRY CEDAR HOMES. IT IS NOT TO BE USED OR REPRODUCED IN ANY MANNER UNLESS AUTHORIZED IN WRITING BY TOWN & COUNTRY CEDAR HOMES.

Town & Country Cedar Homes
 Luxury Built for Generations to Come...
 4772 US 131 South • Petoskey, MI 49770
 1.800.968.3178 • www.cedarhomes.com

RESIDENCE EXCLUSIVELY DESIGNED FOR:
BRIAN & COLLETTE REINE
 DRAWING NAME:
SECOND FLOOR PLAN

FILE NAME:	080012A22
JOB NO.	080012
SCALE:	A5 SHOWN
PLOTTED:	09-05-08

SHEET:
A2.2